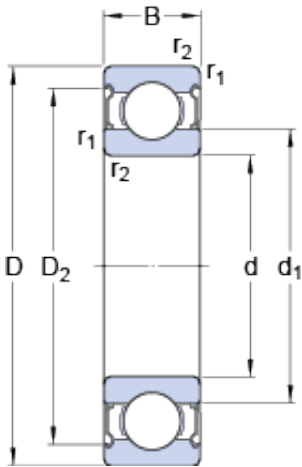




# Baochen Machinery Technology Co., Ltd



17 mm x 47 mm x 14 mm SKF E2.6303-2Z deep groove ball bearings

Bearing No. E2.6303-2Z

E2.6303-2Z Bearing 2D drawings and 3D CAD models

Size	47x17x14 mm
Bore Diameter	47 mm
Outer Diameter	17 mm
Width	14 mm
d	17 mm
D	47 mm
B	14 mm
d <sub>1</sub>	26.52 mm
D <sub>2</sub>	39.58 mm
r <sub>1,2</sub> - min.	1 mm
d <sub>a</sub> - min.	22.6 mm
d <sub>a</sub> - max.	26.4 mm
D <sub>a</sub> - max.	41.4 mm
r <sub>a</sub> - max.	1 mm
Basic dynamic load rating - C	13.8 kN
Basic static load rating - C <sub>0</sub>	6.6 kN
Fatigue load limit - P <sub>u</sub>	0.275 kN
Reference speed	37000 r/min
Limiting speed	19000 r/min
Calculation factor - k <sub>r</sub>	0.03
Calculation factor - f <sub>0</sub>	12